



## Most Recognized Symbols

**State Bird - The Cardinal.** (1943, c. 595.)

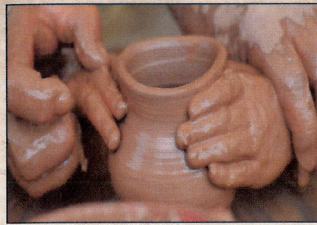
**State Colors - Red and Blue.** The shades appearing in the North Carolina State Flag and the American Flag as the official State colors. (1885, c. 291.)

**State Flower - Dogwood.** We often see our state bird resting in the arms of these beautiful flowering trees in spring. (1941, c. 289.)



**Elaine F. Marshall**  
Secretary of State

*The Great State of North Carolina is home to a rich tapestry of diverse natural and cultural beauty. The NC General Assembly has designated these symbols in celebration of our natural and cultural treasures.*



**Art Medium - Clay.** Clay continues to be an important art medium contributing to the State's cultural, social, and economic prosperity. Naming Seagrove as the birthplace of NC pottery. (2013-189, s. 1.)

**Marsupial - Virginia Opossum.** The Virginia Opossum is one of the oldest and most primitive species of mammal found in North America. (2013-189, s. 1.)



**Salamander - Marbled Salamander.** The Marbled Salamander is a member of the 'mole' salamander family and can grow to be from 9 to 11 centimeters. (2013-189, s. 1.)

**Frog - Pine Barrens Tree Frog.** The Pine Barrens Tree Frog is dying out due to loss of habitat, and is considered "significantly rare" - NC Natural Heritage Program. (2013-189, s. 1.)



**Fossil - Megalodon Shark Teeth.** The Megalodon went extinct about 2 million years ago, or Miocene era. Possibly it was unable to adapt to changing ocean conditions. (2013-189, s. 1.)

**Butterfly - Eastern Tiger Swallowtail.** Selected because it can be found in all 100 counties of NC and is easy to locate and recognize. (2012-29, s. 1.)



**Sport - Stock Car Racing.** Suggested by students at Lake Norman Elementary and Mount Mourne IB School in Iredell County who referred to themselves as 'the Pit Crew.' (2011-187, s. 1.)

**Mineral - Gold.** Discovered by a 12 year old boy in 1799 in Cabarrus County, started North Carolina's gold rush. His name was Conrad Reed, of Reed's Gold Mine. (2011-233, s. 1.)



**Horse - Colonial Spanish Mustang.** Of NC's Currituck Outer Banks, have survived more than four centuries of hurricanes, and fierce winters. (2010-6, s. 1.)

**Saltwater Fish - Channel Bass.** A.K.A. "Red Drum" are usually found in large numbers along the coastal waters. Some have been discovered to weigh up to 75 pounds. (1971, c. 274.)

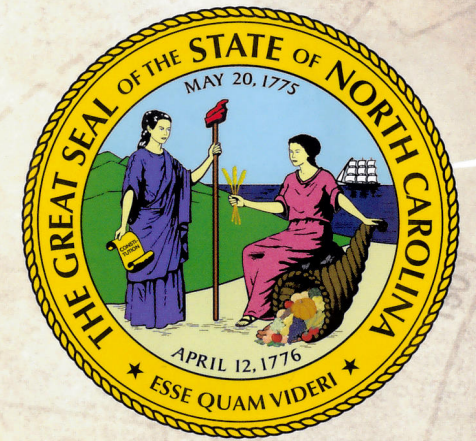


**Freshwater Trout - Southern Appalachian Brook.** Mostly restricted to small headwater streams in our NC mountains. (2005-387, s. 2.)

**Christmas Tree - Fraser Fir.** This symbol is the result of the hard work of eighth grade students at Harris Middle School in Spruce Pine. (2005, c. 387, s. 1.)



# North Carolina State Symbols



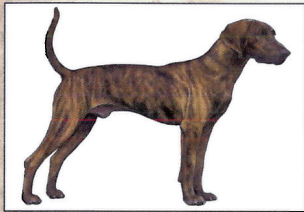
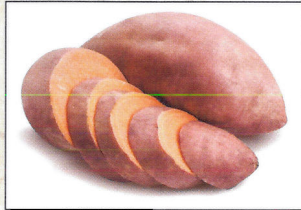
**Elaine F. Marshall**  
Secretary of State

Office of the Secretary of State  
P.O. Box 29622  
Raleigh, NC 27626-0622  
[www.sosnc.gov](http://www.sosnc.gov)  
919.814.5400



**Fruit - Scuppernong Grape.** This variety of muscadine grape has the distinction of being the first grape ever actively cultivated in the U.S. (2001-488, s. 1.)

**Vegetable - Sweet Potato.** Was grown in NC by the Native Americans long before the European colonization of North America. (1995, c. 521, S. 3.)



**Dog - Plott Hound.** The only officially recognized breed of dog developed in N.C. The name is from the Plott family in Haywood Co. (1989, c.773, s.1.)

**Boat - Shad Boat.** First built in the 1870s by George W. Creef, who combined traditional split-log techniques with conventional plank-on-frame construction. (1987, c. 366.)



**Beverage - Milk.** Became law on June 12, 1987, when NC cows produced 179 million gallons of milk a year, earning approximately \$4,800 per cow. (1987, c. 347.)

**Rock - Granite.** The granite in North Carolina is described as first in quality in the southeastern states and second in quantity to that of Georgia. (1979, c. 906, s.1.)



**Reptile - Eastern Box Turtle.** Are found all across NC from the mountains to the coast, although they are not common on the Outer Banks. (1979, c-154, s. 1.)

**Precious Stone - Emerald.** Highly prized. First found in Alexander Co. (1874), later in Mitchell Co. (1890), and Cleveland Co. (1897). (1973, c. 136, s. 1.)



**Insect - Honeybee.** Vital as pollinators of several major cash crops, court records indicate the presence of bees in the Albemarle region as early as 1697. (1973, c.55)

**Mammal - Gray Squirrel.** Being so adaptable and omnivorous, squirrels can flourish in hardwood forests and suburban woodlands. (1969, c.1207.)



**Shell - Scotch Bonnet.** Found from North Carolina to Brazil. Distinguished by its pattern of small orange squares, which give it a plaid appearance. (1965, c. 681.)

**Tree - Pine.** Eight species native to NC, the 1963 legislature decided not to favor one at the expense of the other seven. (1963, c. 41.)



## Other Official Adoptions

**State Military Academy - Oak Ridge Military Academy.** (1991, c. 728, s. 1.)

**Official Community Theater - Thalian Association of Wilmington.** (2007-68, s. 1.)

**State Aviation Hall of Fame and Museum, and State Museum of Aviation - The Asheboro Municipal Airport.** Designated as the official location of the NC Aviation Hall of Fame and the NC Aviation Museum.

**The Wilmington International Airport.** Designated as the official location of the NC Museum of Aviation. (2003-363, s. 1.)

**State Honor and Remember Flag.** Created by Honor and Remember, Inc., to honor and recognize members of the Armed Forces. (2010-91, s.4; 2011-183, s. 106.)

**State Tartan - The Carolina Tartan.** (1991, c. 85, s. 1.)

**State Folk Art - Whirligigs.** Created by Vollis Simpson. (2013-189, s. 1.)

**State Birthplace of Traditional Pottery.** Seagrove (2005-78, s. 1; 2006-264, s. 70.)

**State Veterans Day Parade - Town of Warsaw.** (2016-33, s. 1.)

**State Fly Fishing Museum - Bryson City, Swain Co.** (2018-11, s. 1.)

**North Carolina State Festivals: International Festival.** Folkmoot USA, (2003-315, s. 1.)

**Collard Festival.** Ayden. (2007-28, s. 1.)

**Outdoor Festival.** Montgomery Co. (2018-11, s. 2.)

**Peanut Festival.** Dublin, NC Third Wk. in Sept. (2013-313, s. 1.)

**Woolly Worm Festival.** Banner Elk, Third Wk. in Oct. (2018-89, s. 1.)

**Shrimp Festival.** Sneads Ferry. (2011-65, s. 1.)

**Spring & Fall Livermush Festivals.** Shelby in Spring, and Marion in the fall. (2012-29, s. 1.)

**Mullet Festival.** Swansboro. (2012-29, s. 1.)

**Food Festival of Piedmont Triad.** Lexington Barbecue Festival. (2007-533, s. 1.)

**Potato Festival.** Albemarle. (2009-24, s. 1.)

**Shad Festivals.** (2011-36, s. 1; 2013-282, s. 1.)

Grifton Shad Festival

East Arcadia Blue Monday Shad Fry.

**Herring Festival.** Town of Jamesville. (2011-59, s. 1.)

**Watermelon Festivals.** (1993, s. 212, s. 1.)

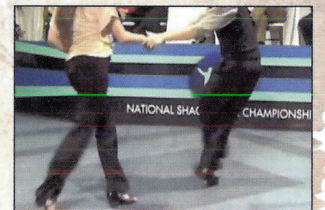
First week in August, Hertford Co.

Mid-July, Fair Bluff, Columbus Co.



**Folk Dance - Clogging.** The name derives from the Gaelic word for "time", is a distinctive dance style originating in the Appalachian mountains. (2005-218, s. 1.)

**Popular Dance - Shag.** A type of swing dance that developed during the 1930-40's combining nimble footwork with upbeat R&B, beach music. (2005-218, s. 1.)



**Carnivorous Plant - Venus Flytrap**  
The only plant that moves to entrap its prey. "One of the most wonderful plants in the world." -Charles Darwin. (2005-74, s. 1.)

**Wildflower - Carolina Lilly.** This flower grows throughout the state, from the forests and hills of Cherokee Co. to the coastal swamplands. (2003-426, s. 1.)



**Blue Berry - Blueberry.** According to the USDA, NC produces the 6th most blueberries in the country (2016). (2001-488, s. 1.)

**Red Berry - Strawberry.** According to the USDA, NC produces the 3rd most strawberries in the country (2016). (2001-488, s. 1.)

